

Region 24 Middle School All-Region Scales

Horn in F

Revised August 2017

Concert Bb (F Major Scale)



Concert F (C Major Scale)



Concert C (G Major Scale)



Concert G (D Major Scale)



Concert D (A Major Scale)



Concert Db (Ab Major Scale)



Concert Ab (Eb Major Scale)



Concert Eb (Bb Major Scale)



Region 24 Middle School All Region Scales

Revised April 2016

CONCERT	Bb	F	C	G	D	Db	Ab	Eb	Chrom.
Flute	Bb-2	F-2	C-3	G-2	D-2	Db-2	Ab-2	Eb-2	C-C 3 Oct
Oboe	Bb-2	F-1	C-2	G-1	D-2	Db-2	Ab-1	Eb-2	Bb-Eb 2.5 Oct
Bassoon	Bb-2	F-2	C-2	G-2	D-2	Db-2	Ab-1	Eb-2	Bb-G 2.5 Oct
Clarinet	C-2	G-3	D-2	A-2	E-3	Eb-2	Bb-2	F-3	E-G 3.5 Oct
Bass Clarinet	C-2	G-2	D-1	G-2	E-2	Eb-2 Lower 2 Oct	Bb-2	F-2	Eb-C 2.5 Oct
Alto Sax Bari Sax	G-1	D-2	A-1	E-2	B-2	Bb-2	F-2	C-2	Bb-F 2.5 Oct
Tenor Sax	C-2	G-1	D-2	A-1	E-2	Eb-2	Bb-2	F-2	Bb-F 2.5 Oct
Trumpet	C-1	G-2	D-1	A-1	E-1	Eb-1	Bb-1	F-1	G-G 2 Oct
French Horn	F-2	C-1	G-1 Lower octave	D-1	A-1	Ab-1	Eb-2	Bb-1	F-F 2 Oct
Trombone	Bb-1	F-2	C-1	G-1	D-1	Db-1	Ab-1	Eb-1	F-F 2 Oct
Euphonium Tuba	Bb-1	F-2	C-1	G-1	D-1	Db-1	Ab-1	Eb-1	F-F 2 Oct

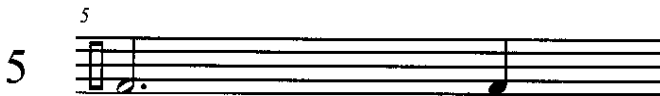
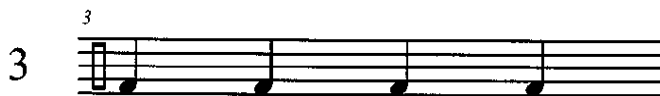
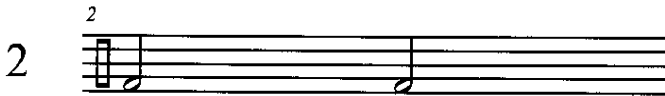
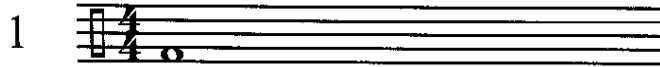
Scale Pattern




Region 24 Sightreading Rhythms


Count and play each line, then play them using your region scales.

Basic Rhythms



Basic Rhythms with Various Beat Placements and Rests

9 

10 

11 

12 

13 

14 

15 

16 

17 

Region 24

2016 Sight-Reading Etudes

Flute

Marty Nelson


(Flute)

1 
mf

5 
p *f*

(Oboe)

2 
mf

13 
p *f*

(Bsn)

3 
mf

21 
p *f*

(Clar.)

4 
mf

29 
p *f*

Region 24
2016 Sight-Reading Etudes

Flute pg. 2

(B. Clar.)

5 ³³
f

37
mp *f*

(Bb Contra)

6 ⁴¹
mf

45
p *f*

(Alto)

7 ⁴⁹
mf

53
p *mf*

(Tenor)

8 ⁵⁷
mf

61
f *mp*

(Bari)

9 ⁶⁵
mf *p*

69
mf

Region 24
2016 Sight-Reading Etudes

Flute pg. 3

(Trpt)

10 ⁷³

77

(Horn)

11 ⁸¹

85

12 ⁸⁹

93

13 ⁹⁷

101

14 ¹⁰⁵

109

REGION 24 MIDDLE SCHOOL AUDITION PROCEDURES 2017

PHASE I

Phase I is an individual audition. You will perform anonymously for 3 judges. Scales must be memorized. You should use your own etudes in the audition.

BRASS AND WOODWINDS

Enter the room with your instrument and music only - no cases, scale sheets, phones

Material

- 2 major scales (20 points each)
- A portion of the Lyrical Etude (100 points)
- One of Technical Etudes (100 points)
- Sightreading (40 points)

Procedure

1. Play the major scales
2. Play the selected portion of the Lyrical etude
3. Play one of the Technical Etudes
4. Study then play the sightreading

Play through the entire audition process without prompting from the judges. You may play your starting note before each scale and before each etude. You will have 30 seconds to study the sightreading piece.

PERCUSSION

Enter the room with your mallets, sticks, and music only - no stick bags or phones

Material

- Snare/Accessories etude (100 points)
- Snare sightreading (20 points)
- Mallet etude (100 points)
- Mallet sightreading (20 points)

Procedure

1. Play the snare/accessories etude
2. Study and play the snare sightreading
3. Play the mallet etude
4. Study and play the mallet sightreading

Play through the entire audition process without prompting from the judges. You will have 30 seconds to study your snare sight reading piece, and 15 seconds to study a shorter mallet sightreading.

PHASE II

Phase II is a “round-robin” style audition. You will be in a room with approximately 20 other students, and you will rotate performing the material. This is still an anonymous audition; the judges are behind a curtain. The chromatic scale must be memorized. You should use your own etudes in the audition.

BRASS AND WOODWINDS

Material

- Chromatic scale (40 points)
- A portion of the Lyrical Etude (100 points)
- The Technical etude not chosen in Phase 1 (100 points)

Procedure

1. You will be arranged by audition letter in the room.
2. The student with the first audition letter will perform chromatic, followed by each student in letter order.
3. You will get a 30-second warm up every 5 students. Every student is expected to participate in every warm up. Students will receive a 1 minute warm up before each etude round.
4. The student with an audition letter 1/3 of the way through the alphabet will perform the first etude, followed by each student in letter order.
5. The student with an audition letter 2/3 of the way through the alphabet will perform the second etude, followed by each student in letter order.

PERCUSSION

Material

- Timpani etude (100 points)
- Snare/Accessories etude cut not performed in Phase I (100 points)
- Mallet etude cut not performed in Phase I (100 points)

Procedure

1. You will be arranged by audition letter in the room.
2. The student with the first audition letter will perform the timpani etude, followed by each student in letter order.
3. You will get a 30-second warm up every 5 students. Every student is expected to participate in every warm up. Students will receive a 1 minute warm up before each etude round.
4. The student with an audition letter 1/3 of the way through the alphabet will perform the snare/accessories etude, followed by each student in letter order.
5. The student with an audition letter 2/3 of the way through the alphabet will perform the mallet etude, followed by each student in letter order.

Other information:

- You are allowed to use your own snare drum in both phases
- You must use the provided marimba
- You will be responsible for tuning the _____ timpani BEFORE you begin your audition.